

# Indoor Retop - Method

## Retopping of Sports Hall Systems

### Fields of application

retopping of all existing sports hall systems

### 1<sup>st</sup> steps

The floor must be **carefully inspected** in order to define a technically perfect refurbishment as well as the optimal overcoating products and the necessary preparations.

**Preliminary** tests are mandatory before the refurbishment can begin:

1) Check the **indentation behaviour** of the existing floor for permanent indentations (dents) under load. These may occur - e.g. due to material fatigue.

In such cases a refurbishment by re-topping is no longer recommended as even after the refurbishment the indentations would occur during stress.



2) An **adhesion** test must be done to find if a / which primer is necessary.

3) We also recommend a test on **force reduction** – especially if the flooring needs to meet the EN 14904.

We will be glad to **support** you by **measuring samples** of the existing floor and suggest a suitable refurbishment. On request the hall can also be inspected by one of our technicians.

Depending on the **state** of the existing surface, it may be possible that a **different procedure** is necessary or **sport-functional requirements** can not be achieved despite a refurbishment.

### Preparations

Sports surfaces to be re-topped must be firm and free of loose and brittle particles and substances, which impair adhesion such as oil, grease, rubber skid marks, paint or other contaminants.

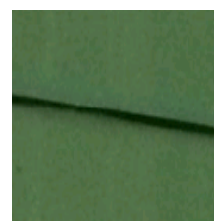
The surface has to be **ground** in order to improve the adhesion. It is important to take off the **entire** sealing lacquer and the line paint.



The surface to be re-topped must be carefully **checked for** cracks, loose parts, **defects** etc.



Any **cracks** or **damages** in the existing flooring must be **repaired prior** to the retopping. If there are major damages in the existing flooring, the installation of a **reinforcing fabric** might be required (see “*Installation of a reinforcing fabric*”).



unevenness



filling with coating

After sweeping the floor is cleaned with an acetone-water mixture and is left to [dry completely](#).

### Refurbishment

Then (should no further preparations be necessary) the coating - CONIPUR 226 or CONIPUR 224 (N) is applied.



It is necessary to [re-roll](#) freshly applied material with a second clean paint roller in order to obtain a uniform surface with a minimum of overlap marks.



Seal the surface with CONIPUR 67 or CONIPUR 3202 W using "Microtex" roller (tuft size 10-12 mm), [rolling out well width wide](#) to eliminate roller marks. Keep the overlap areas to a minimum – longer breaks to be avoided.

### Products / quantities for standard re-topping without additional preparations

|                        | product                                 | consumption  | application      | remarks   |
|------------------------|---|--|------------------|---|
| <b>Coating Layer</b>   | <b>CONIPUR 226</b><br>(CONIPUR 224 (N)) | approx. 2.5 kg/m <sup>2</sup><br>(approx . 2.6 kg/m <sup>2</sup> ) | notched squeegee | coating <a href="#">material</a> for the <a href="#">repairs</a> needs to be <a href="#">added</a>  |
| <b>Sealing Lacquer</b> | <b>CONIPUR 67</b><br>(CONIPUR 3202 W)   | 0.15 kg/m <sup>2</sup><br>(0.13 kg/m <sup>2</sup> )                | paint roller     | Critical colours regarding coverage must repeatedly be applied until opacity is achieved. Critical colours with respect to staining must be fixed with a transparent sealing lacquer. |
| <b>Line paint</b>      | <b>CONIPUR 3100</b>                     | 15 g/m   | paint roller     | Critical colours regarding coverage must be applied twice.  |

The above information is based on our [experience](#) and is intended as a [guideline](#) only  
Please contact our Technical Service if assistance is needed

### Remarks

For further information and application conditions please see our "General Application Guidelines for Sports Systems Indoor and Outdoor".

For any additional questions please contact our Technical Service.

For the use and installation of the reinforcing fabric please refer to the corresponding data sheet "Reinforcement of reinforcing fabric", installation method and working times can be found in the corresponding product data sheets.