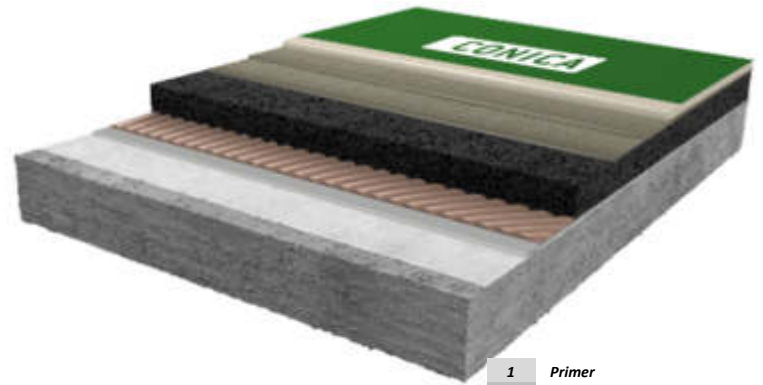


CONIFLOOR IPS+

(Industrial Polyurethane System + Elastic mat)

Tough-hard, low-emission floor coating based on polyurethane resin with elastic SBR mat, with good impact sound reducing properties for indoor use



1	Primer
2	Scratch coat / levelling optional
3	Adhesive
4	SBR mat 4 mm
5	Pore sealer
6	2. Pore sealer / fine levelling
7	Self-levelling coating tough hard Topcoat pigmented

System design and consumption

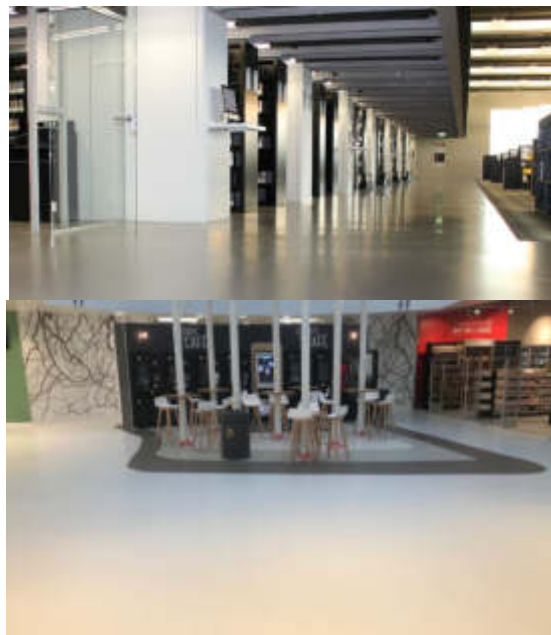
LAYER	PRODUCT	CONSUMPTION (kg/m ²)	QS / FILLER (kg/m ²)	APPLICATION	
1	Primer on strongly absorbent u. porous substrates, if necessary, 2-layer application *	CONIFLOOR 110 / CONIFLOOR 116LE	0.3 – 0.5 * 2-layers if necessary or scratch coat	QS 03/08 0.8 – 1.0	Squeegee / roller / brush Sand broadcasting, not in excess
2.1	Scratch coat / levelling (optional)	CONIFLOOR 110 / CONIFLOOR 116LE filled with QS 01/03	0.6 – 1.0 QS 01/03 MR ≤ 1:1	QS 03/08 2.0 – 3.0	Trowel / smoothing rake / notched trowel or squeegee Sand broadcasting, not in excess
3	Adhesive with elastic mat (SBR mat max. 4 mm)	CONIFLOOR 210 CONIFLOOR mat (G30), 4 mm	0.8 – 1.0 1.0 m ²	none	Notched trowel / notched squeegee / Mat are rolled into fresh adhesive or on small areas first cut and then half side glued in fresh adhesive after 30 – 60 minutes re-roll with floor roller 50 kg
4	Pore sealer, elastic, flame retardant	CONIFLOOR 310 or CONIFLOOR 340 FL	0.8 – 1.0	none	Trowel / smoothing trowel with rounded edges
5	2. pore sealer, fine levelling, elastic, flame retardant	CONIFLOOR 310 or CONIFLOOR 340 FL	0.5 – 0.7	none	Trowel / smoothing trowel with rounded edges
6	Tough hard coating, self-levelling	CONIFLOOR 420 if necessary fillable with QS 01/03 (up to 30%) Depending on layer thickness and temperatures	2.5 – 3.0	none	Notched spatula or trowel / notched squeegee / spike roller for de-aerating at cold conditions or if needed recommend
7	Topcoat, pigmented, matt	CONIFLOOR 520 CW Alternative CONIFLOOR 520 CW ab	0.12 – 0.15	optional CONIFLOOR Ballotini for slip resistance	Roller (micro fibre) 11 mm
System layer thickness		ca. 6.0 – 7.0 mm			
Subsoil	Surfaces must be clean, stable, and free of cracks and voids. In general, substrates must be provided in accordance with the applicable regulations. (See also "General processing guidelines for CONICA coatings, CONICA seals and CONICA parking deck coating systems"). Adhesive tensile strength ≥ 1.5 N / mm ² , max. Residual moisture ≤ 4% -CM, on cementitious substrates. Special precautions must be taken in the event of higher residual moisture levels and moisture by rising water. Preparation of the surface e.g. by grinding (diamond) or shot blasting (Blastrac) with subsequent sweeping and vacuuming is mandatory. The above-mentioned consumption values have been determined in the laboratory under practical conditions to achieve the technical properties. In the case of existing on-site conditions and conditions such as temperature, surface roughness etc., the consumption values may deviate from the stated values. In case of doubt, we recommend creating sample areas on site.				
Notes	For other substrates, which are not mentioned here or special requirements, special primers must be used if necessary, please ask our technical service. Detailed processing instructions can be found in the respective product data sheets or are available on request.				

Areas of application

- Hospitals, medical practices and nursing homes
- Schools, kindergartens, universities
- Industrial areas with light to medium load

System properties

- **Very high** UV and colour resistance with pigmented aliphatic top coat
- **Wide range of colours** accord. to RAL and NCS
- **Very low emissions** tested components
- **Reducing impact and walking noise** (17 dB)
- Slip resistant surfaces R9 – R11
- **Trafficable** with heavy beads or small pallet trucks and similar
- Warm to feet, also **suitable for floor heating**
- **Hygienic**, joint and seamless surfaces easy to clean
- **Bacteriostatic** top coat to reduce bacterial grow **possible**
- Statically **crack bridging**



Technical data (internal / external approvals)

PROPERTIES	STANDARD	VALUES
Statically crack bridging	EN 1062-7	Class A4 > 1.25 mm (achieved < 1.4 mm at 23°C)
Elongation at break (Coating)	DIN 53504	ca. 30 %
Shore-Hardness	DIN ISO 868	69 D after 28 d
Type of use	Following EN 685	Private buildings: 23; public buildings: 33
Impact sound reduction	ISO 10140-1	ca. 17 dB (4 mm + 2 mm)
Impact strength	EN 13813	≥ 6 Nm (IR6)
Abrasion resistance (Taber)	ISO 9352, ASTM D 1044	≤ 15 mg (incl. topcoat)
Abrasion resistance (BCA)	DIN EN 13813	AR ≤ 0,5
Slip resistance	DGUV guide line 108-003 / DIN 51130	Class R9 / R10 / R11
Adhesive strength	DIN ISO 4624	≥ 1,5 N/mm ² (Depends on substrate)
Fire classification	EN 13501-1	E _{fl}
Emission	AgBB /	Low emission certified components

CONICA AG
 Industriestrasse 26
 8207 Schaffhausen/ Swiss
 Tel. +41 (0)52 644 36 00
 Fax +41 (0)52 644 36 99
info@conica.com
www.conica.com

The content of this information sheet is non-binding. With regard to the variety of surfaces and object conditions on the one hand, and on the other hand due to the fact that the application and processing of this product are beyond our control, the buyer and / or user is not released from the obligation to its own responsibility, to check and ensure, that this product is suitable for the intended use. Our verbal, written advice and tests is non-binding.

With the publication of this issue, all previous information on this system is no longer up to date. Since the data sheets are updated regularly, it is the responsibility of the user to have the current version available. Registered users can download current data sheets from our homepage at any time. We would be happy to send them to you on request.